

## Teilleiste

www.pixelhobby.com

Anzahl an Basisplatten = 1  
Anzahl der Pixel-Vierecke = 26  
Anzahl der Farben = 16



**Frame: 1 x 1 P**

801070 Katje III  
2013-09-11

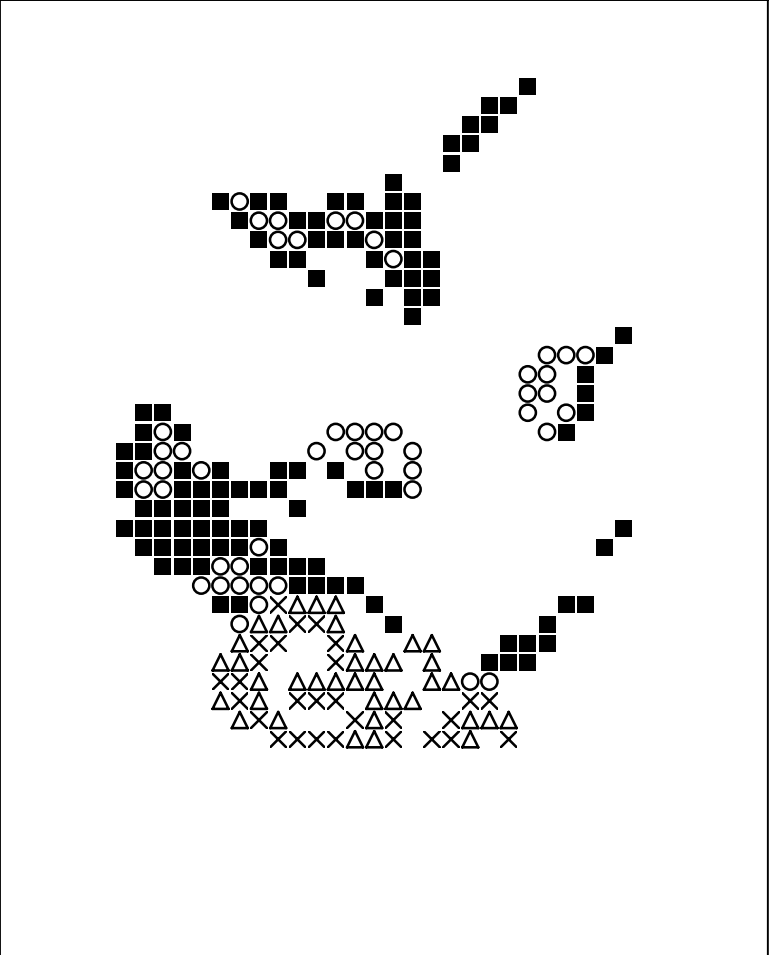
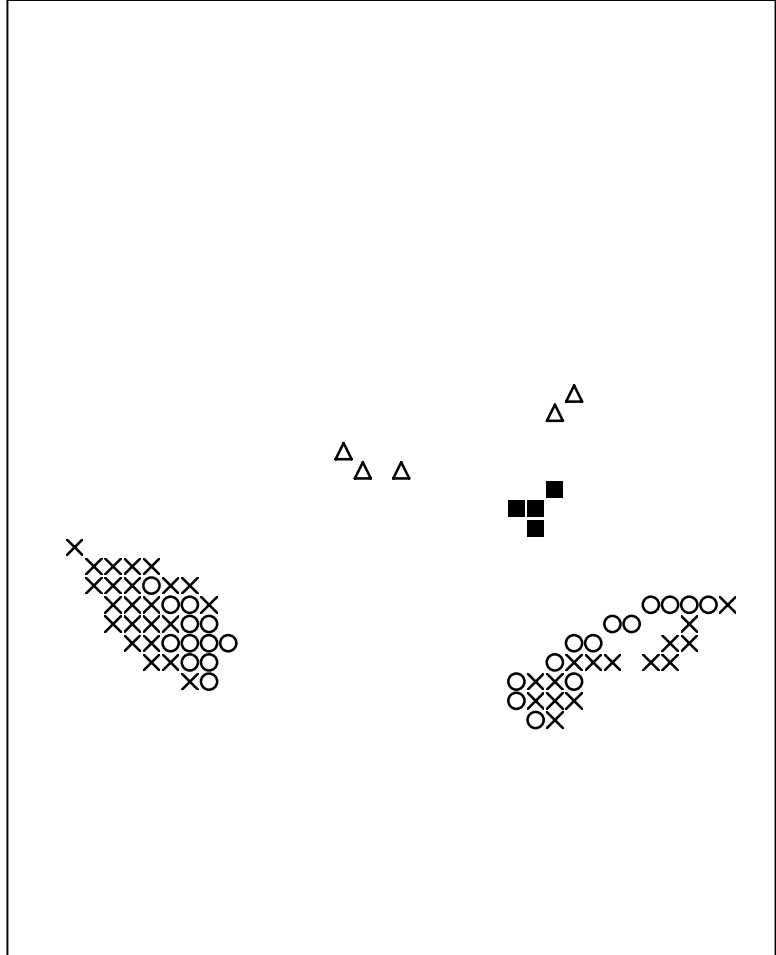
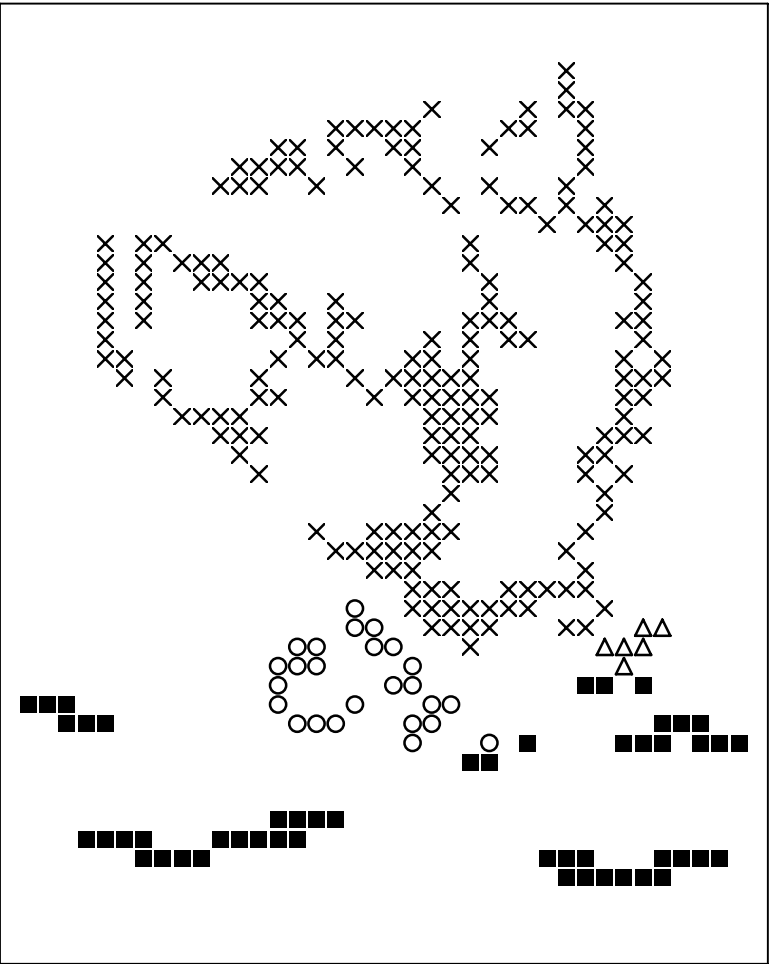
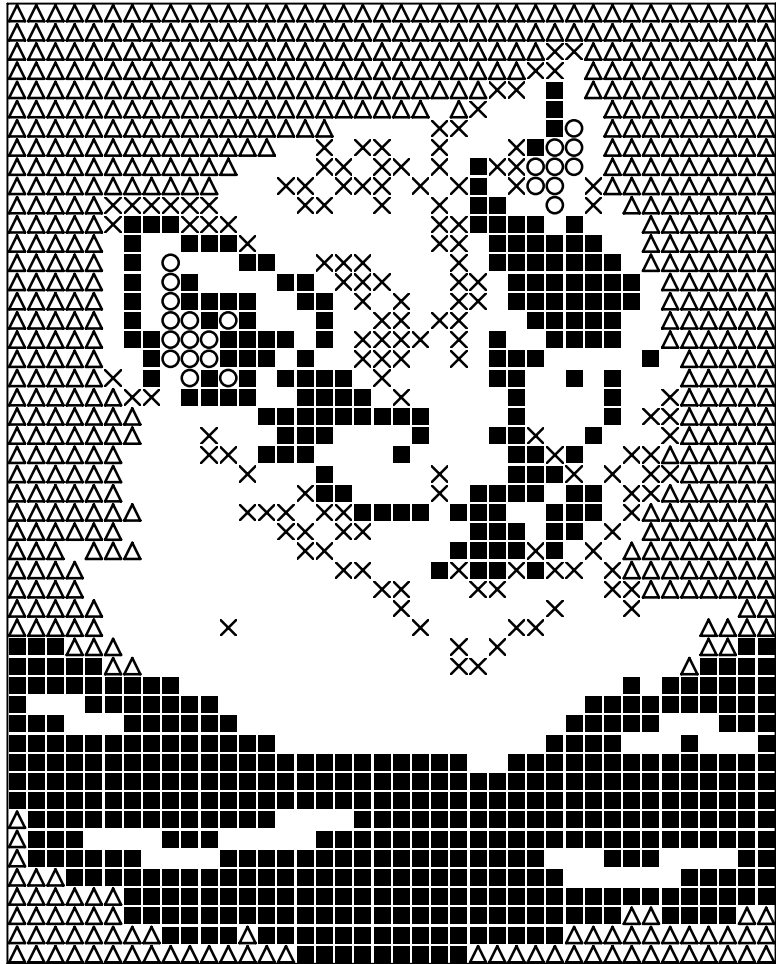
Durch internationales Patent geschützt

Erforderliche Pixel-Vierecke pro Farbe:

100 = 5  
129 = 1  
131 = 2  
133 = 5  
141 = 1  
146 = 1  
180 = 2  
196 = 1  
223 = 1  
245 = 1  
246 = 1  
288 = 1  
297 = 1  
441 = 1  
519 = 1  
520 = 1

Basisplatte 1 100 = ■ 129 = ○ 131 = × 133 = △

Basisplatte 1 141 = ■ 146 = ○ 180 = × 196 = △



Basisplatte 1 223 = ■ 245 = ○ 246 = × 288 = △

Basisplatte 1 297 = ■ 441 = ○ 519 = × 520 = △